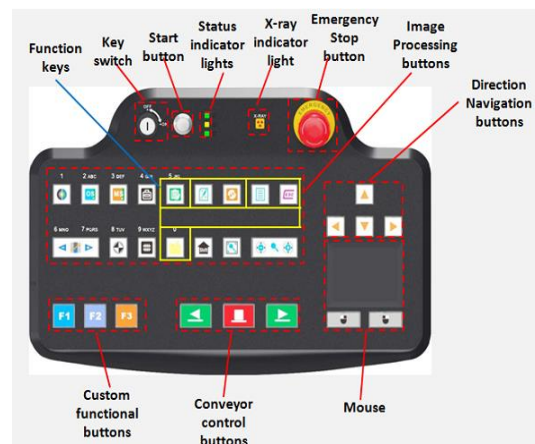
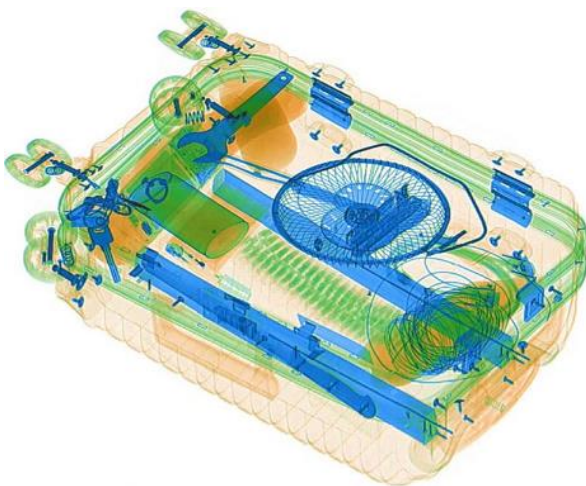
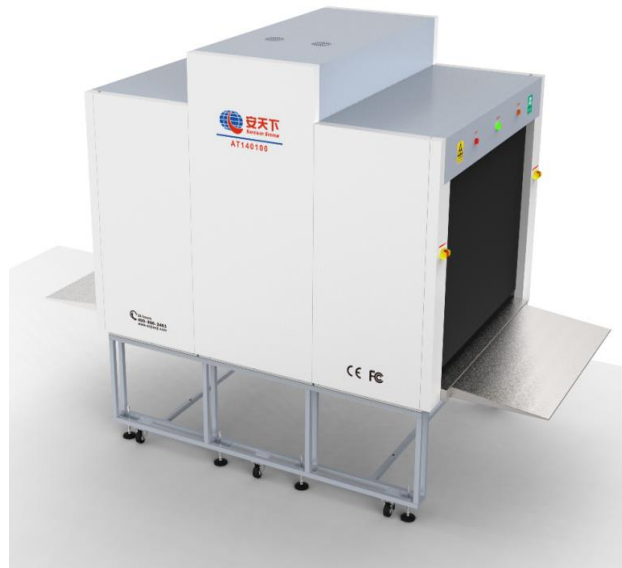




# X-Ray Baggage Scanner AT140100K

## Product highlights

- \* Multilingual operation
- \* Automatic built in test and self diagnosis
- \* Secure access Key
- \* Threat alert and material classification
- \* Auto archiving
- \* Energy saving design
- \* One key turn off
- \* Drugs and explosives inspection
- \* Indication of the date and time
- \* Baggage counter



## Physical Specifications

Unit weight (kgs)	1000
Unit size (mm)	3371(L)*1700(W)*2330(H)
after packed in wooden pallet -	
Gross weight (kgs)	1200
Packing size	#1: 235*182*260cm #2: 75*65*99cm

## General Specifications

Tunnel size(mm)	1404(L)*1024(W)
Conveyor Speed(m/s)	about 0.5, customizable

Conveyor height(mm)	700
X ray dose per each inspection	≤4.8μSv
X ray leakage	≤1μSv/h at any point 5 centimeters outside the external surface
Penetration	40 mm steel
Wire Resolution	AWG38
Penetration Resolution	AWG30
Spatial resolution:	Horizontal:dia 1.3mm, Vertical: dia 2.0mm
Power Consumption	Max. 0.5KW
Noise	<60 dB
Film Safety	Guarantee ASA/ISO1600 Film

### X-ray Generator (single)

Anode Voltage	200 KV adjustable
Ray direction	Downward
Cooling / Duty Cycle	Sealed oil cooling /100%

### Image System

X-ray Sensor	L-Shaped Photodiode Array, 12bit deep
Images process	24bit real time processing ,4colors analysis, Images displayed marked date and ID No., Count the number of bags
Image display	High resolution of 1920*1080 pixel; Image Grey Level: 65536
Image Enhancement	1-64times enlargement continuity, Color/BW, negative, high/low penetration enhancement, brightening, darkening, gray level scan, super enhancement, elimination of organics/inorganics, local enhancement, pseudo color processing, edge enhancement, etc.
Explosives & Narcotics Detection	Suspicious organics highlight(atomic number Zeff=7,8,9)
Suspicious Alarm	Alarm and box line the suspicious objects including hard to penetrate material, explosives and drugs
Threat Image Projection(TIP)	Inserting fictional, but realistic images of threat items into baggage during screening operation, for maintenance of vigilance, as well as training and assessment of image identification capability
Image Recall	30 images recallable
Image Archive	Up to 50,000 images stored automatically, enable transferring to USB disk, and converting to JPG, BMP and other general formats
Miscellaneous Functions	Time/date display, counters, user management, system-on/X-ray-on timers, power on self test, built-in diagnostic facilities, dual-direction scanning, system log, system standby and stimulant training, etc.

## Network Applications

Option: Multiple remote applications available based on Ethernet LAN and windows platform, such as image centralized storage and identification, recheck workstation, etc.

## Operating Environment

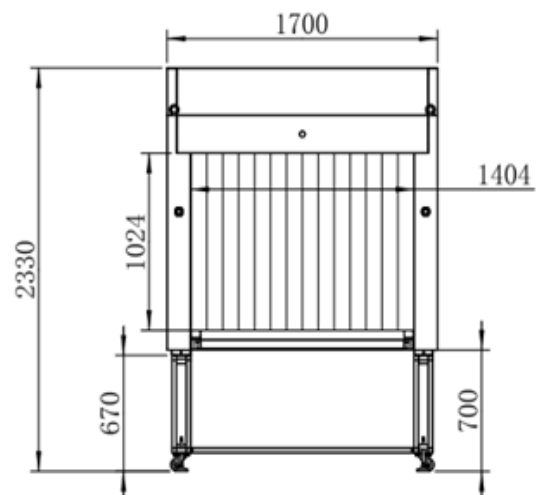
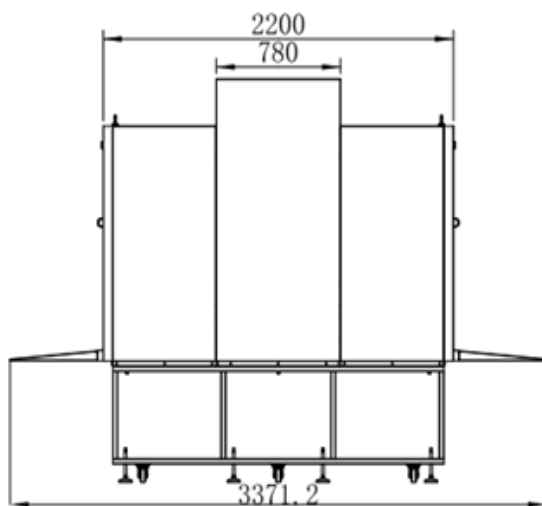
Operation temperature/Humidity	5°C-40°C / 0%-90%(non-condensing)
Storage Temperature/Humidity	-20°C to 60°C / 10%-90%(non-condensing)
Operation Power	220VAC(±10%) 50±3Hz (Options: 110-120V, 230-240V, 60Hz)
Stabilizer and UPS	Optional

## Computer and other

Monitor	One 21.5-inch LCD monitor, 1920*1080, one console desk
RAM	4GB
Hard Disk	1T
Keyboard	Special designed
System	Windows 10
Electric roller	Three-phase

## Compliance

International	* ISO19001; ISO14001; ISO45001 * CE RoHS * FDA FCC
---------------	--



### SAFEGWAY INSPECTION SYSTEM COMPANY LIMITED

Add: Building A&E, Qifeng Digital Park, Baili Road, Nanwan Street, LongGang District, Shenzhen China

Tel: 0755-84656535 Email: info@chinasafeequipment.com www.chinasafeequipment.com