

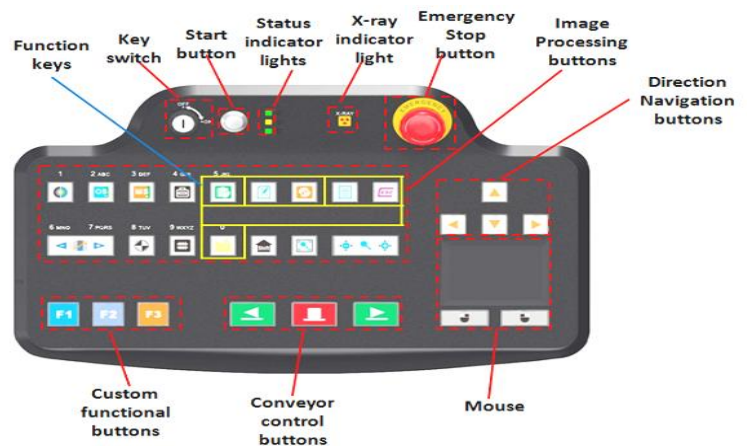


## Heavy duty pallet and cargo inspection

The AT150180B is heavy duty x-ray inspection system with a tunnel opening of 150 cm x 180 cm. It is especially designed for screening crates, cargo and pallet sized objects at all security sites, including airports and customs locations.

## Product Highlights

- \* Radiation safe
- \* High resolution, high penetration and good image quality
- \* Multilingual operation
- \* Automatic built in test and self diagnosis
- \* Super strong load-bearing capacity
- \* Threat alert and material classification
- \* Energy saving design
- \* One key turn off with patent
- \* Drugs and explosives detection



## Physical Specifications

Tunnel size	1505(W)*1800(H) mm
Unit weight	3100 kg
Unit size	7127(L)*2422(W)*2338(H) mm

### after packed on wooden pallet -

Gross weight	3500 kg
Packing size	#1: 463*273*240cm      #3: 176*171*53cm
	#2: 176*171*53cm      #4: 120*65*100cm

## General Specifications

Conveyor Speed	0.22 m/s forward or backward
Conveyor height	350 mm
Conveyor capacity	2000 kg
Frame design	304 stainless steel, 2-5 mm cold rolled plate and square steel, double-layer staggered lead impregnated safety curtain
X ray dose/inspection	≤4.5μSv
X ray leakage	≤1μSv/h at any point 5 cm outside the external surface. FDA standard is ≤5μSv/h
Steel penetration	30/38/43 mm
Wire Resolution	AWG38
Penetration Resolution	AWG32
Spatial resolution:	1.3mm Horizontal, 1.3mm Vertical
Power Consumption	max. 2KW
Noise	<60 dB
Film Safety	Guarantee ASA/ISO1600 Film

## X-ray Generator (single)

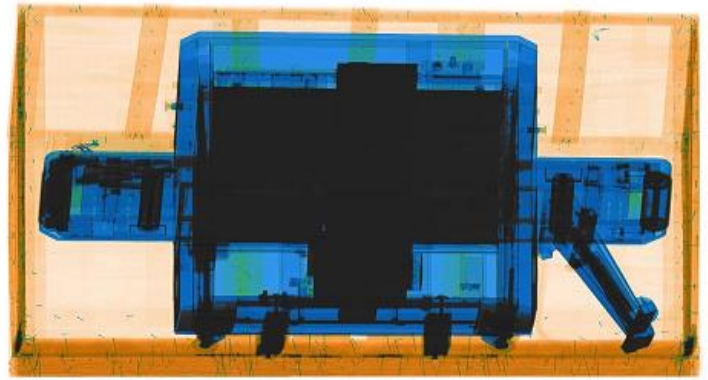
Anode Voltage	Options: 160KV, 180KV, 200KV
Beam direction	Horizontal
Cooling / Duty Cycle	Sealed oil cooling /100%

## Computer and other

Monitor	Two 21.5-inch LCD monitors, 1920*1080
Console	One
CPU	Intel (R) i3 (R) 3.3GHz
RAM	4GB
Hard Disk	1T
Keyboard	Special designed
Platform	Windows 10
Electric roller	Three-phase

## Operating Environment

Ops temperature	5°C-40°C
/Humidity	0%-90%(non-condensing)
Storage Temperature	-20°C to 60°C
/Humidity	10%-90%(non-condensing)
Operation Power	220V(+10% ~ -15%) 50±3Hz
	Options: 110-120V, 230-240V, 60Hz



## Imaging System

Detector	3712 channels in an L-Shaped Array
Image processing	Color / black and white imaging, local enhancement, high penetration, low penetration, super enhancement, organic stripping, inorganic stripping, reverse color, brightening, darkening, gray level scan/variable density, continuously zoom maximum 64x, pseudo color imaging, organics enhancement, suspicious item alarm and notation, edge enhancement imaging, etc.
Explosives & Narcotics Detection	Suspicious organics highlight(atomic number Zeff=7,8,9)
Suspicious Alarm	Alarm and box line the suspicious objects including hard to penetrate material, explosives and drugs
Threat Image Projection(TIP)	Inserting fictional, but realistic images of threat items into baggage during screening operation, for maintenance of vigilance, as well as training and assessment of image identification capability
Image pullback	30 images
Image Archive	Up to 50,000 images stored automatically, enable transferring to USB disk, and converting to JPG, BMP and other formats
Miscellaneous Functions	Time/date display, counters, user management, system-on/x-ray-on timers, power on self test, built-in diagnostic facilities, bidirection scanning, forced scanning, image search and export, system setting, system log, system standby and stimulant training,etc.
Options	UPS, additional roller, remote work station, network integration, video monitoring, etc.

