



Introduction

AT3300 is under vehicle surveillance system (UVSS) for under vehicle security check. It helps detect contraband and illegal rendition under the vehicle quickly. It is faster and more accurate than the traditional under vehicle inspection mirror, greatly improved the speed and accuracy of the vehicle safety inspection, and saved time and manpower.

AT3300 is used at the entrance of the parking lot and important government buildings, road traffic checkpoints, customs, border inspection ports, and big event venues. The system is easy to move and install.

Product highlights

- Advanced linear CCD scanning technology
- High resolution complete color image of under the vehicle
- Weather proof scanning unit (IP68 the highest level)
- Anti-fog function
- Multilingual Graphical User Interface(GUI)
- Option: Automated License Plate Reader(ALPR)

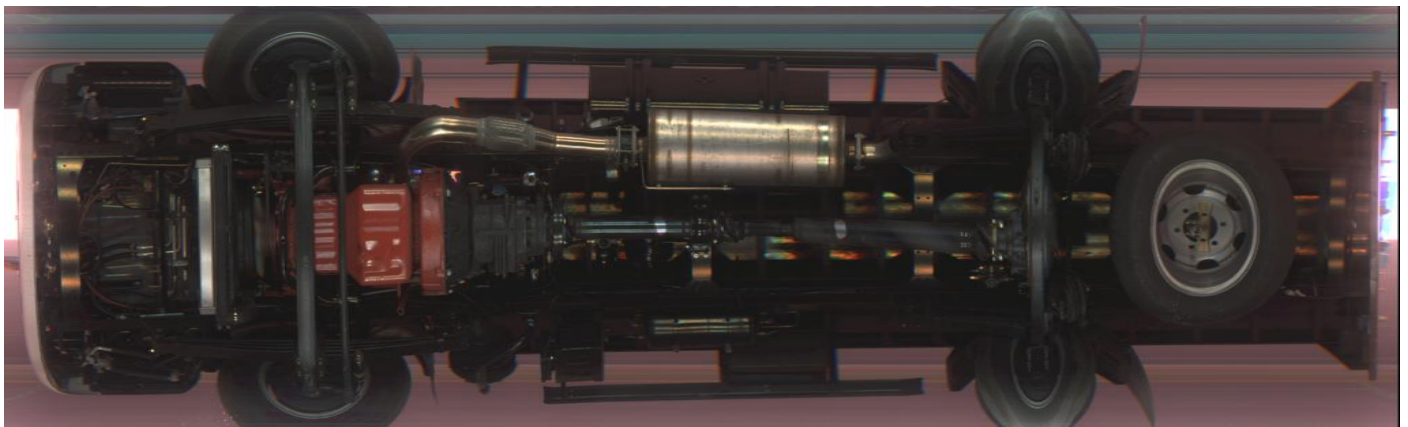
CCD Scanning

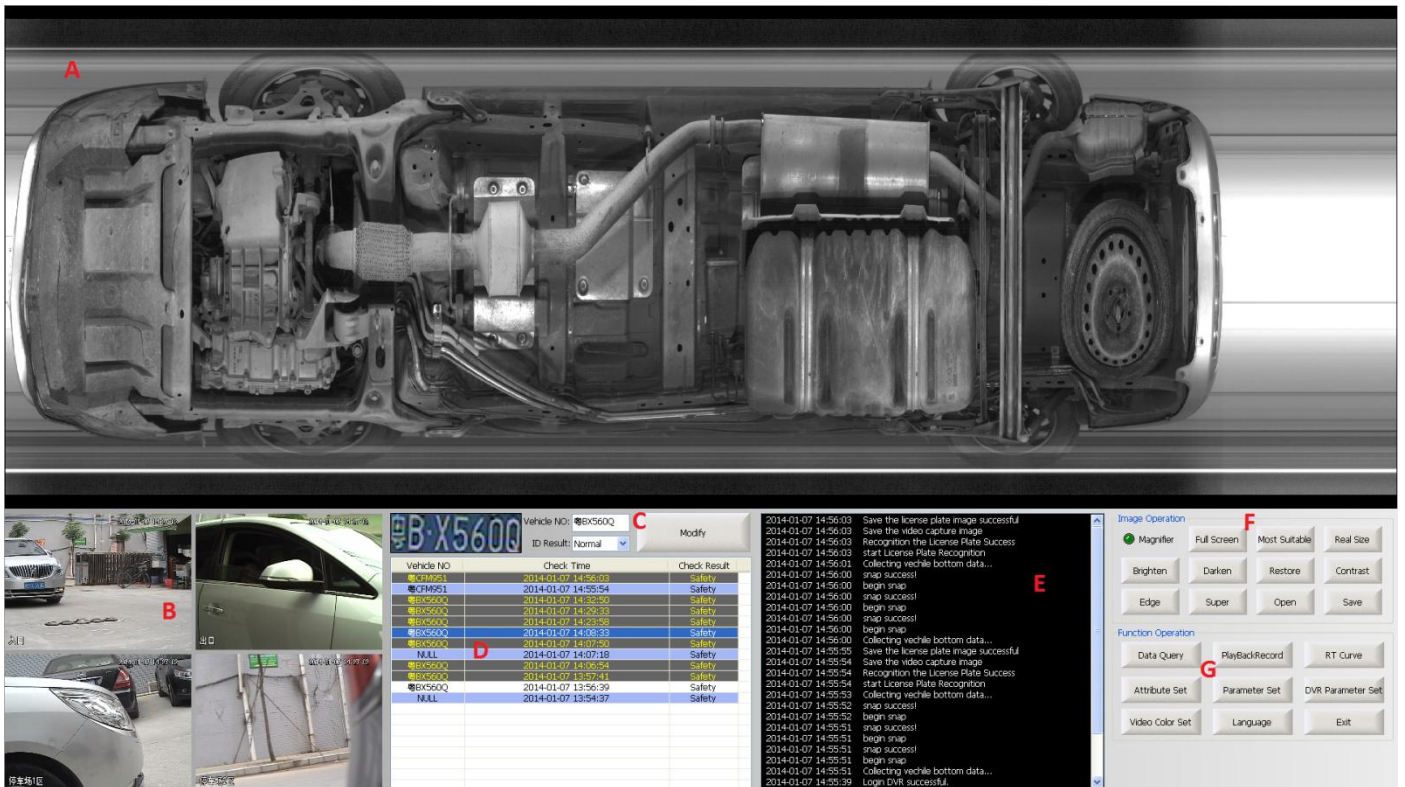
- Maximum scanning rate: 18kHz
- Vehicle speed: 1-60 km/h, recommend < 30 km/h
- View angle: 170 degrees
- Scanner data line: 10 meters(length customizable)
- Lighting: 320W
- Lighting components: 4 single sealed LED surface light sources, life span 50000h
- Load-bearing weight: 50T
- Waterproof grade: IP68 (the highest level)
- Weight of the scanning device: 180KG
- Size of the scanning device: 1200*350*210mm

Imaging system

- Technology: Linear array CCD scan technology and dynamic imaging of BW/color
- Scanning resolution: ≥ 2048 pixels CCD / ≥ 4096 pixels CCD
- Imaging speed: <1 second
- Image display mode: Large-format horizontal display;
- Image storage format: Standard BMP or JPEG
- System interface language: can be customized
- Image data transmission: network RJ45
- Scene image display: ≥ 1 channel
- Image search: Retrieve the image by date, time, license plate number, and images.
- Image resolution: 12000 × 6144
- Automatic scan: Display the image in 1s after the vehicle passes at a speed of 1-65km/h
- Automatic image storage: Save no less than 10,000 pictures and delete the expired pictures automatically
- Imaging function: Adjust saturation, contrast, balance and sharpening, zoom in and out (1-16), and local enlargement

Scanned image





- A. Under vehicle image display area: real-time display of vehicles at the detected image, historical images, and bottom of the vehicle underbody after treatment images.
- B. Real-time video display area: Real-time display the monitoring video, capturing vehicle plate video, and then they were saved by digital video surveillance DVR. (Customized is based on the actual usage scenarios.)
- C. License plate number information display area: Displaying the detected vehicle license plate capturing photos with automatic identification of the results. click [Modify] button can modify the number of recognition errors.
- D. Vehicle information list: Checking vehicle information in all day, including license plate number, the checking time, vehicle surveillance results.
- E. Real-time log information list: real-time display of the region need to run the process produces some log information to facilitate the use of personnel or maintenance personnel system view real-time operation of the system state.
- F. Image manipulation functional areas: the image to zoom; brighten, darken; edge enhancement, super-enhanced, contrast enhancement, magnifying glass, real size, most suitable, such as open and save image.
- G. Functional operating areas: Setting attributes of license plate recognition, associated parameters of line CCD camera, DVR video attributes, video playback and registry equipment, as well as the system language, real-time curve, historical data query functions.

Computer and other

- Monitor One 22-inch true color LCD monitor
- Console A console which can lock the display and keyboard
- CPU Intel Core Quad-Core Processor
- RAM DDR3, greater than 4GB
- Hard Disk 500G High Speed Hard Disk
- Graphics Card: DDR3, 192BIT Independent Graphics Card
- Platform Windows XP/ Windows 7

Operating environment

- Operating temperature: -25 ° C ~ 60 ° C
- Storage temperature: -40 ° C ~ 75 ° C
- Power supply: AC110-240V 50~60Hz ±3Hz

Component

No.	Sub system	Qty	Hardware
1	Under vehicle scanning equipment	1 set	Camera
			Scanner frame
			Lighting system
			Vehicle sensor
2	Operation desk	1 set	System host
			22 inch monitor
			Console desk
3	Video monitoring	1 set	Camera
		1 set	Tripod
4	Control unit	1 set	Control cabinet
			Ventilation system
5	Under vehicle surveillance system software	1 set	
6	License plate number recognition system (Option)	1 set	



Packing size

1. 80*75*156cm
 2. 70*40*120cm
 3. 130*45*48cm
- Total 1.55CBM 300kg

Reference



SAFEGWAY INSPECTION SYSTEM LIMITED/SAFEGWAY INSPECTION SYSTEM COMPANY LIMITED

Add: Building A&E, Qifeng Digital Park, Nanwan Street, Longgang District, Shenzhen China

Tel: 0755-84656535 Email: info@chinasafeequipment.com www.chinasafeequipment.com