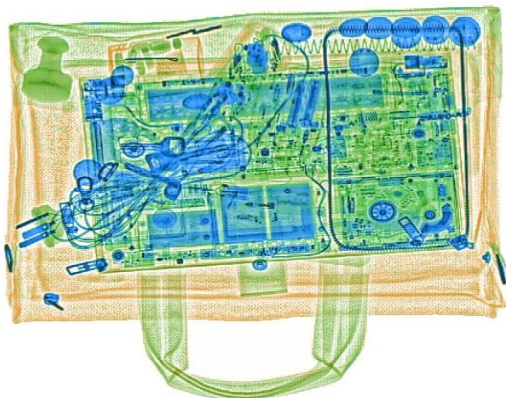




X-Ray Baggage Scanner AT5030/AT5030C

Product highlights

- * Multilingual operation
- * Automatic built in test and self diagnosis
- * Secure access Key
- * Threat alert and material classification
- * Auto archiving
- * Energy saving design
- * One key turn off
- * Drugs and explosives inspection
- * Indication of the date and time
- * Baggage counter



Physical Specifications

Unit weight (kgs)	300
Unit size (mm)	1660(L)*746(W)*1165(H)
after packed in wooden pallet -	
Gross weight (kgs)	400
Packing size	179*87*137cm

General Specifications

Tunnel size(mm)	500(L)*300(W)
Conveyor Speed(m/s)	0.22
Conveyor height(mm)	663

Conveyor Max Load(kgs)	100
X ray dose per each inspection	$\leq 2.5\mu\text{Sv}$
X ray leakage	$\leq 1\mu\text{Sv/h}$ at any point 5 centimeters outside the external surface
Penetration	32 mm steel
Wire Resolution	AWG40
Penetration Resolution	AWG32
Spatial resolution:	Horizontal: dia 1.0mm, Vertical: dia 1.0mm
Power Consumption	max. 500W
Noise	<60 dB
Film Safety	Guarantee ASA/ISO1600 Film

X-ray Generator (single)

Anode Voltage	140 KV
Ray direction	Upward
Cooling / Duty Cycle	Sealed oil cooling /100%

Image System

X-ray Sensor	L-Shaped Photodiode Array, 12bit deep
Images process	24bit real time processing ,4colors analysis, Images displayed marked date and ID No., Count the number of bags
Image display	High resolution of 1920*1080 pixel; Image Grey Level: 65536
Image Enhancement	1-64times enlargement continuity, Color/BW, negative, high/low penetration enhancement, brightening, darkening, gray level scan, super enhancement, elimination of organics/inorganics, local enhancement, pseudo color processing, edge enhancement, etc.
Explosives & Narcotics Detection	Suspicious organics highlight(atomic number $Z_{\text{eff}}=7,8,9$)
Suspicious Alarm	Alarm and box line the suspicious objects including hard to penetrate material, explosives and drugs
Threat Image Projection(TIP)	Inserting fictional, but realistic images of threat items into baggage during screening operation, for maintenance of vigilance, as well as training and assessment of image identification capability
Image Recall	30 images recallable
Image Archive	Up to 50,000 images stored automatically, enable transferring to USB disk, and converting to JPG, BMP and other general formats

Miscellaneous Functions	Time/date display, counters, user management, system-on/X-ray-on timers, power on self test, built-in diagnostic facilities, system log, system standby and stimulant training, etc.
-------------------------	--

Options

Dual-direction scanning, additional table, intelligent roller, etc.

Operating Environment

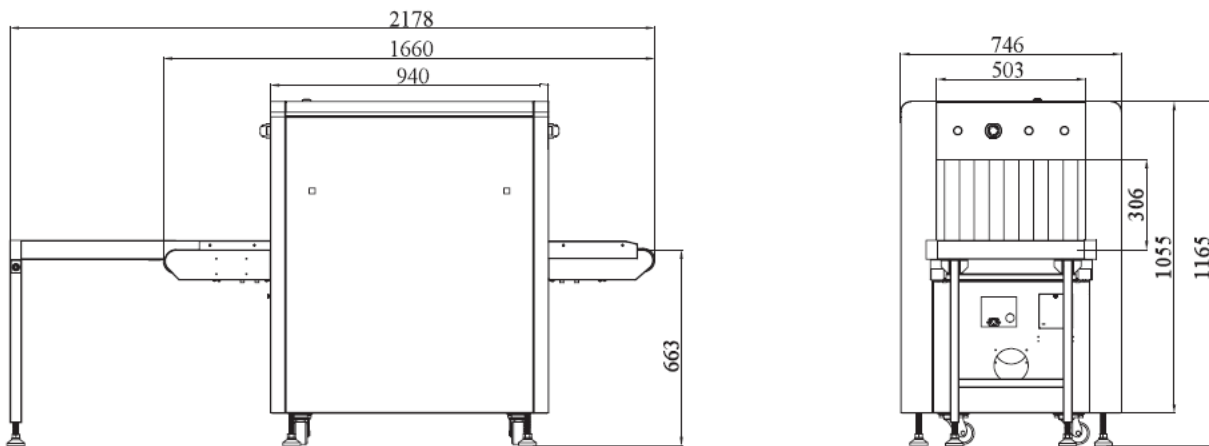
Operation temperature/Humidity	5°C-40°C / 0%-90%(non-condensing)
Storage Temperature/Humidity	-20°Cto 60°C / 10%-90%(non-condensing)
Operation Power	220VAC(±10%) 50±3Hz (Options: 110-120V, 230-240V, 60Hz)
Stabilizer and UPS	Optional

Computer and other

Monitor	One 21.5-inch LCD monitor, 1920*1080, no console desk
RAM	4GB
Hard Disk	1T
Keyboard	Normal keyboard
System	Windows 10
Electric roller	Single-phase

Compliance

International	* ISO19001; ISO14001; ISO45001 * CE RoHS * FDA FCC
---------------	--



SAFEWAY INSPECTION SYSTEM COMPANY LIMITED

Add: Building A&E, Qifeng Digital Park, Baili Road, Nanwan Street, LongGang District, Shenzhen China

Tel: 0755-84656535 Email: info@chinasafeequipment.com www.chinasafeequipment.com