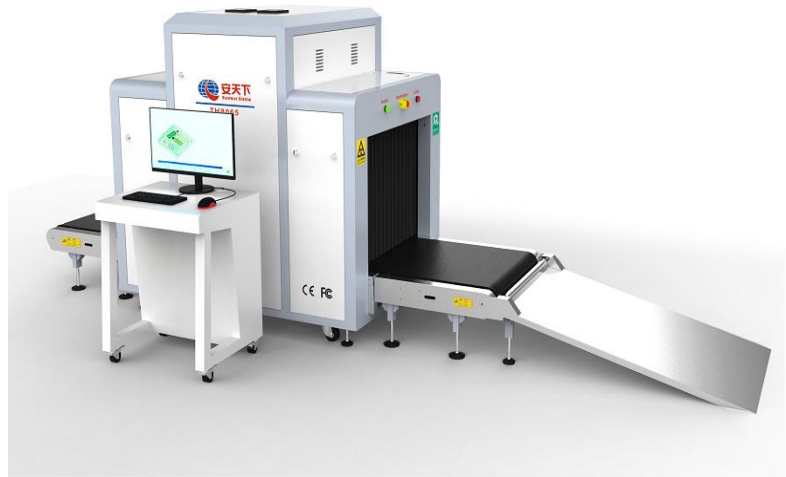




X-Ray Baggage Scanner TH8065

Product highlights

- * Multilingual operation
- * Automatic built in test and self diagnosis
- * Secure access Key
- * Threat alert and material classification
- * Auto archiving
- * Energy saving design
- * One key turn off
- * Drugs and explosives inspection
- * Indication of the date and time
- * Baggage counter



Physical Specifications

| | |
|---------------------------------|-------------------------------------|
| Unit weight (kgs) | 630 |
| Unit size (mm) | 2848(L)*1095(W)*1536(H) |
| after packed in wooden pallet - | |
| Gross weight (kgs) | 800 |
| Packing size | #1: 212*122*177cm #2: 75*65*99cm |

General Specifications

| | |
|--------------------------------|--|
| Tunnel size(mm) | 800(L)*650(W) |
| Conveyor Speed(m/s) | 0.22 |
| Conveyor height(mm) | 341 |
| Conveyor Max Load(kgs) | 200 |
| X ray dose per each inspection | $\leq 3.5 \mu\text{Gy}$ |
| X ray leakage | $< 1 \mu\text{Gy/h}$ at any point 5 centimeters outside the external surface |
| Penetration | 34 mm steel |

| | |
|------------------------|---|
| Wire Resolution | AWG38 |
| Penetration Resolution | AWG32 |
| Spatial resolution: | Horizontal:dia 2.0mm, Vertical: dia 2.0mm |
| Power Consumption | max. 1KW |
| Noise | <60 dB |
| Film Safety | Guarantee ASA/ISO1600 Film |

X-ray Generator (single)

| | |
|----------------------|--------------------------|
| Anode Voltage | 160 KV adjustable |
| Ray direction | Downward |
| Cooling / Duty Cycle | Sealed oil cooling /100% |

Image System

| | |
|----------------------------------|---|
| X-ray Sensor | L-Shaped Photodiode Array, 12bit deep |
| Images process | 24bit real time processing ,4colors analysis, Images displayed marked date and ID No., Count the number of bags |
| Image display | High resolution of 1920*1080 pixel; Image Grey Level: 65536 |
| Image Enhancement | 1-32 times enlargement continuity, Color/BW, negative, high/low penetration enhancement, brightening, darkening, gray level scan, super enhancement, elimination of organics/inorganics, local enhancement, pseudo color processing, edge enhancement, etc. |
| Explosives & Narcotics Detection | Suspicious organics highlight(atomic number $Z_{eff}=7,8,9$) |
| Suspicious Alarm | Alarm and box line the suspicious objects including hard to penetrate material, explosives and drugs |
| Threat Image Projection(TIP) | Inserting fictional, but realistic images of threat items into baggage during screening operation, for maintenance of vigilance, as well as training and assessment of image identification capability |
| Image Recall | 30 images recallable |
| Image Archive | Up to 10,000 images stored automatically, enable transferring to USB disk, and converting to JPG format |
| Miscellaneous Functions | Time/date display, counters, user management, system-on/X-ray-on timers, power on self test, built-in diagnostic facilities, dual-direction scanning, system log, system standby and stimulant training, etc. |
| Options | Intelligent roller, network, etc. |

Operating Environment

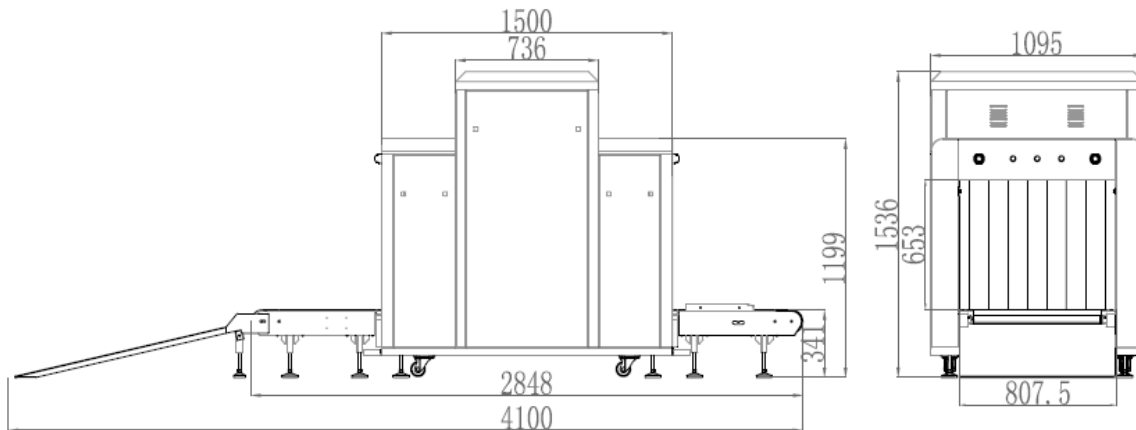
| | |
|--------------------------------|---|
| Operation temperature/Humidity | 5°C-40°C / 0%-90%(non-condensing) |
| Storage Temperature/Humidity | -20°C to 60°C / 10%-90%(non-condensing) |
| Operation Power | 220VAC(±10%) 50±3Hz (Options: 110-120V, 230-240V, 60Hz) |
| Stabilizer and UPS | Optional |

Computer and other

| | |
|-----------------|--|
| Monitor | One 21.5-inch LCD monitor, 1920*1080, one console desk |
| RAM | 1GB |
| Keyboard | Special designed |
| System | Embedded Linux operating system, multi core ARM, stable and reliable |
| Electric roller | Three-phase |

Compliance

| | |
|---------------|--|
| International | * ISO19001; ISO14001; ISO45001 * CE RoHS * FDA FCC |
|---------------|--|



SAFEGWAY INSPECTION SYSTEM COMPANY LIMITED

Add: Building A&E, Qifeng Digital Park, Baili Road, Nanwan Street, LongGang District, Shenzhen China

Tel: 0755-84656535 Email: info@chinasafeequipment.com www.chinasafeequipment.com